

The Recreational Fishing Alliance of NSW "Promoting Sustainable Fishing"



NEWS BULLETIN 33
10th September 2007

Draft Plan of Management for Meroo National Park & Bamunj State Conservation Area

To all,

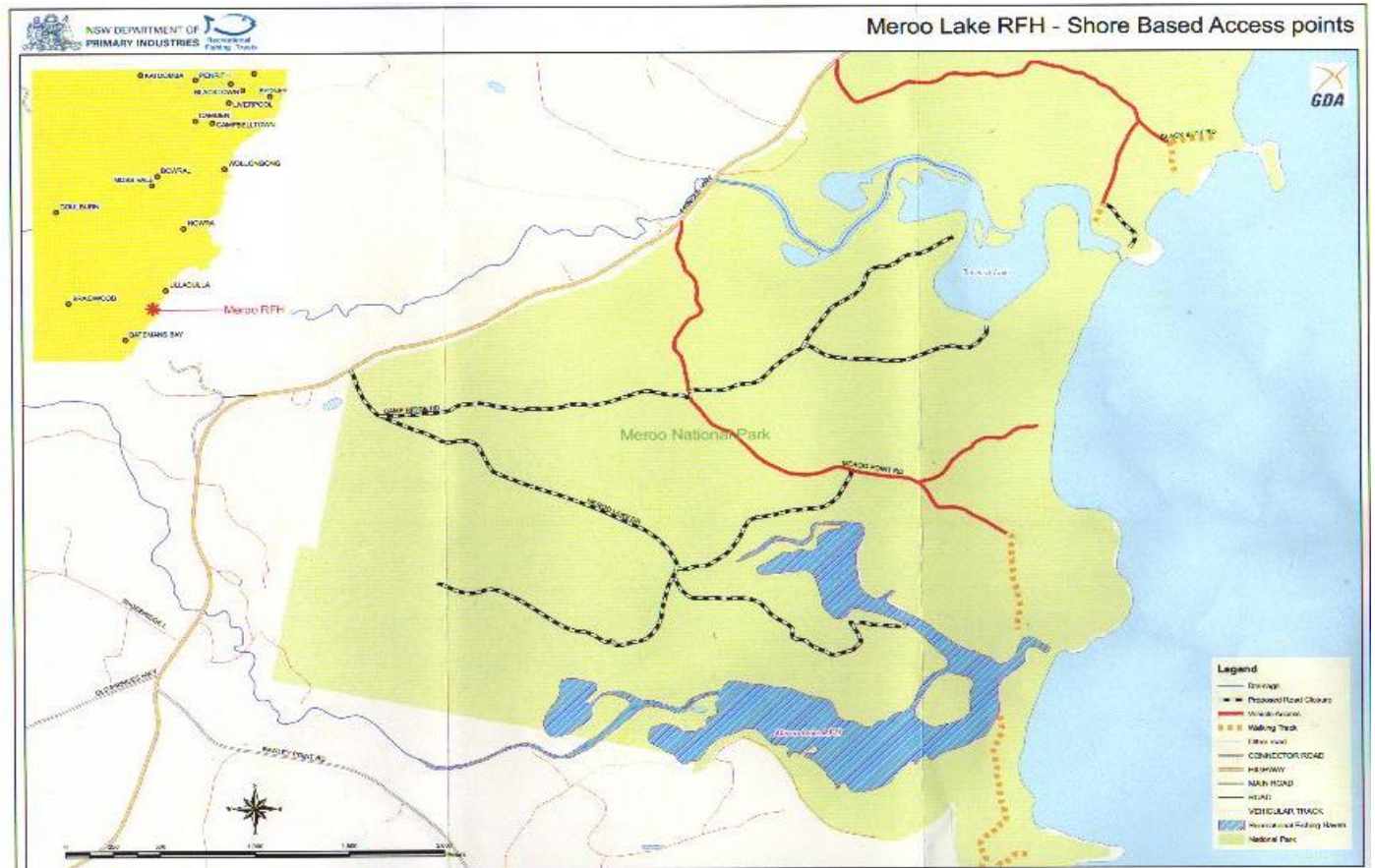
Please pass this bulletin onto all local Fishing Clubs, Tackle Stores, Caravan Parks, Boat Outlets, Pubs, and RSL Clubs and to those who are interested or concerned about the proposed loss of access to Meroo Lake. Please feel free to distribute this bulletin far and wide.

The NSW Department of Primary Industries are seeking support from Recreational Fishers which will enable them to develop a strong case to insure vehicle access is maintained to the Recreational Fishing Haven (RFH) for all recreational fishers especially for the families, the young, the elderly and the disabled.

Recreational fishers paid good money to have these areas as RFHs.

On the next page of this bulletin you will find attached correspondence from the NSW Department of Primary Industries, undersigned by John Diplock. (Manager, Recreational Fisheries) This letter explains what sort of information is required by DPI to consult with the Department of Environment and Climate Change. (DECC)

If you need any further information please do not hesitate to contact the Recreational Fishing Alliance of NSW through our website, www.rfansw.com.au.



To subscribe/unsubscribe to this news bulletin contact the RFA of NSW at RFANSW
www.rfansw.com.au

The Recreational Fishing Alliance of NSW "Promoting Sustainable Fishing"



NSW DEPARTMENT OF
PRIMARY INDUSTRIES

Dear Secretary

I am writing to you regarding the draft Plan of Management for Meroo National Park and Barnunj State Conservation Area prepared by the Department of Environment and Climate Change (DECC).

The draft Plan of Management for Meroo National Park proposes to restrict road access to Meroo and Termeil Lakes. This will be achieved via the closure of the only road (Meroo Lake Drive) to the shore of Meroo Lake. Similarly it is proposed to close Camp Ridge Road which provides access to the southern shore of Termeil Lake (black and white hatch road, refer to attached map). These actions aim to provide comprehensive protection for Termeil and Meroo lakes because of their high conservation value, as identified by the 2002 NSW Healthy Rivers Commission Report. Remaining access to Meroo Lake is proposed to be via walking track only while access to Termeil Lake will only be via the Termeil Point camping area.

As you are aware, Meroo Lake became a Recreational Fishing Haven in 2002. NSW DPI is currently consulting with DECC regarding the draft Plan of Management, including maintaining road access to Meroo and Termeil Lakes. If members of your fishing club fish in these Lakes, it would be appreciated if you could provide some details about their fishing activities including:

- Number of members that fish in Meroo and Termeil Lakes.
- The approximate total number of days fished by your members in each or both lakes in the last 12 months.
- Any other relevant information.

Please indicate if you support the closure of public road access to Meroo Lake Recreational Fishing Haven (RFH) and other RFHs (and restricted access to Termeil Lake). This will greatly assist DPI with consultation with DECC regarding the proposed road closure. Please forward your submissions as soon as possible to:

Recreational Fisheries Management
NSW Department of Primary Industries
PO Box 21
CRONULLA NSW 2230.

If you have any questions regarding the above matter please contact Mr Alistair McBurnie, Fisheries Manager - Recreational Access Freshwater on (02) 6042 4214.

Yours sincerely

John Diplock
Manager, Recreational Fisheries

FISHERIES MANAGEMENT
Agriculture and Fisheries Division
PO Box 21, CRONULLA NSW 2230

www.dpi.nsw.gov.au
Tel: 02 9527 8411
Fax: 02 9527 8560